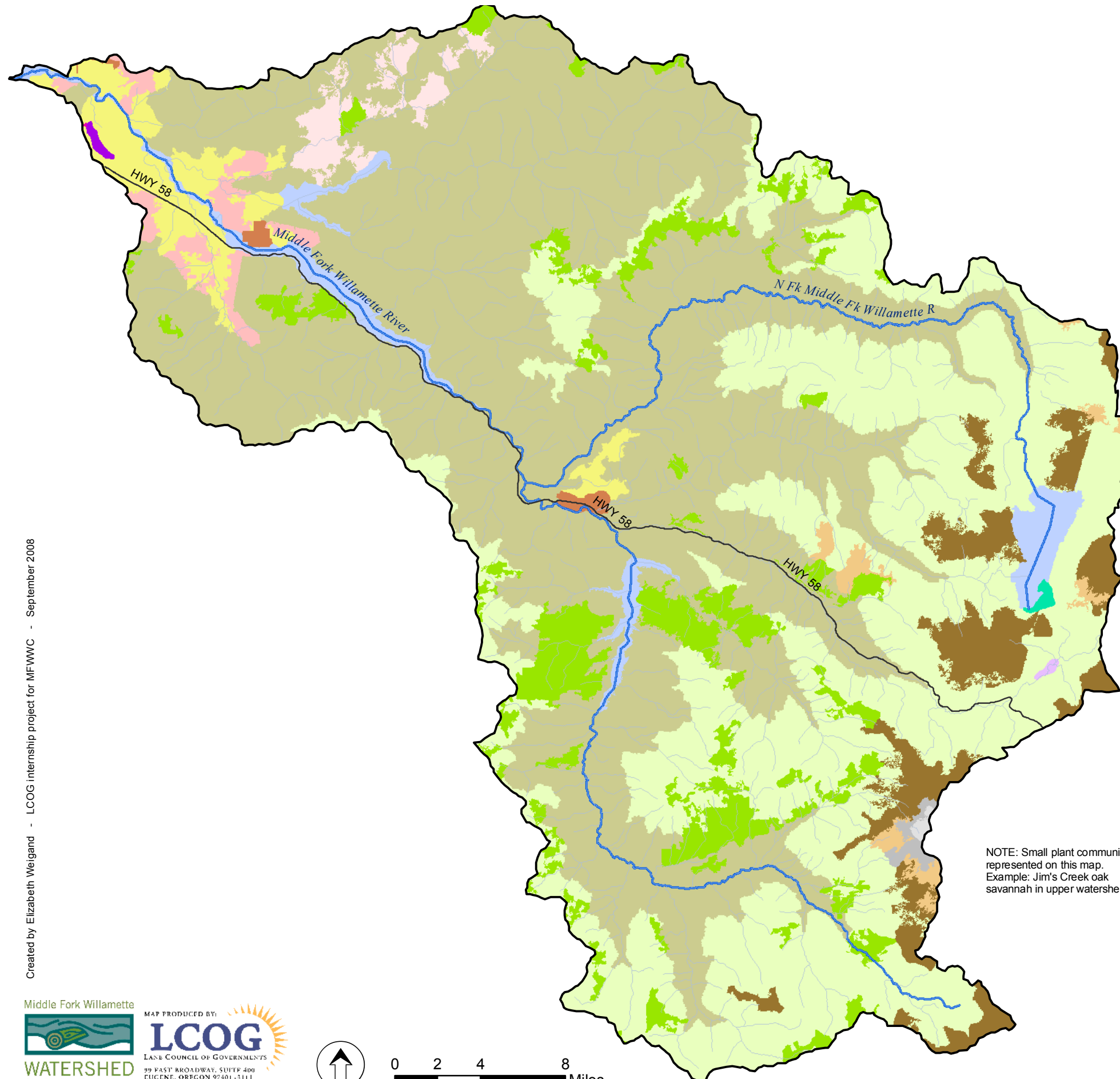


# Vegetation

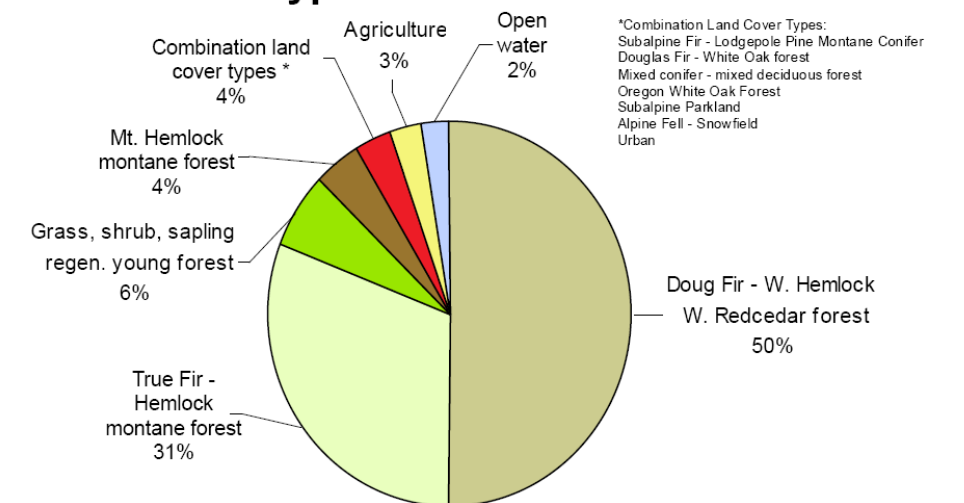
## Middle Fork Willamette Watershed



### Land Cover Class

- Mountain Hemlock montane forest
- True Fir - Hemlock montane forest
- Subalpine Fir - Lodgepole Pine montane conifer
- Douglas Fir - Western Hemlock - Western Redcedar forest
- Douglas Fir - White Oak forest
- Mixed conifer - mixed deciduous forest
- Oregon White Oak forest
- Grass - shrub - sapling or regenerating young forest
- Agriculture
- Urban
- Subalpine parkland
- Alpine fell - snowfield
- Open water
- NWI Palustrine Shrubland
- NWI Estuarine Emergent
- NWI Palustrine Emergent
- Middle Fork Willamette River main stems
- Other rivers, streams
- Major roads

### Land Cover Type Distribution



NOTE: Small plant communities not represented on this map.  
 Example: Jim's Creek oak savannah in upper watershed.

Created by Elizabeth Weigand - LCOG internship project for MFWWC - September 2008

