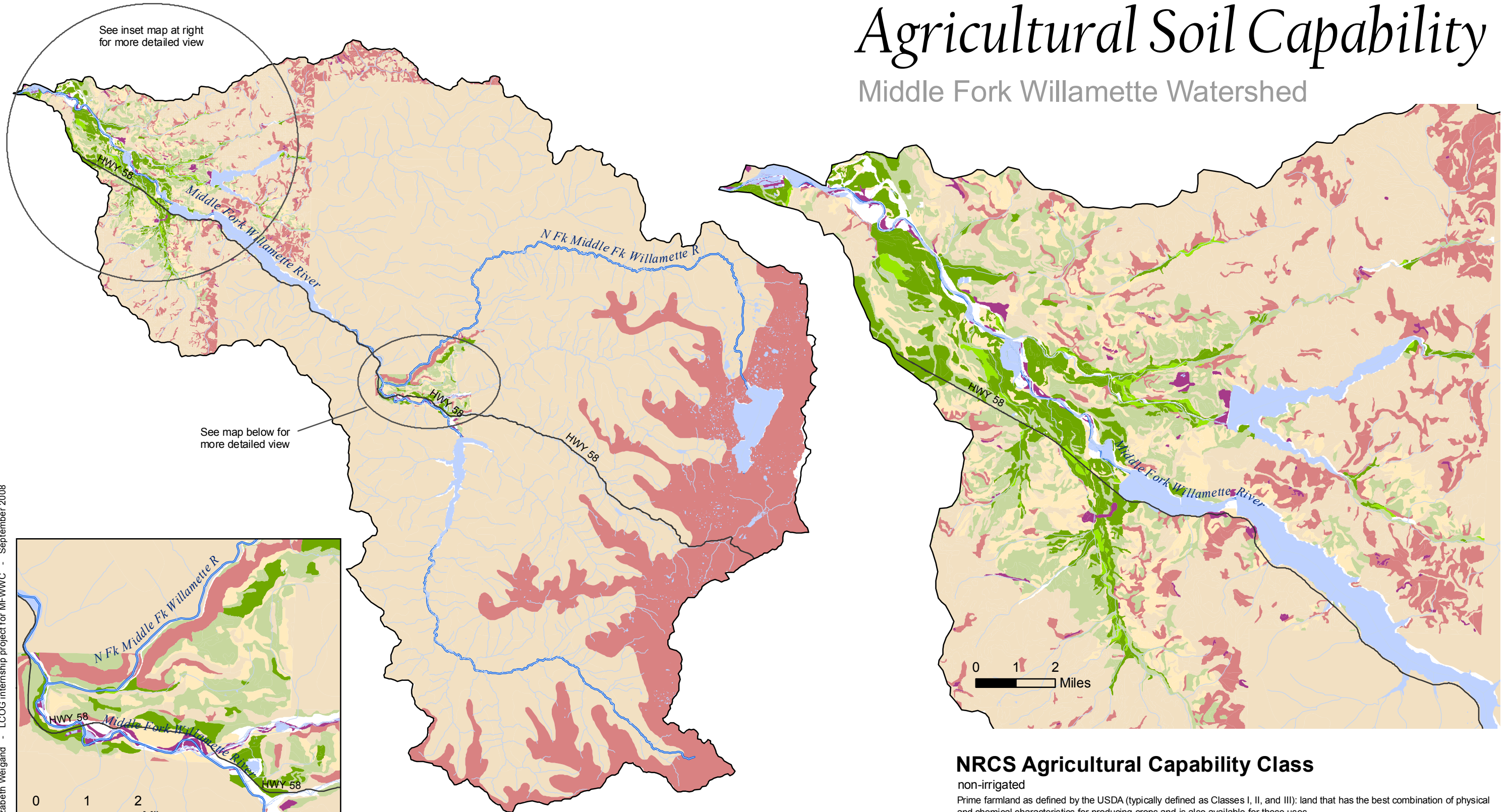


Agricultural Soil Capability

Middle Fork Willamette Watershed



NRCS Agricultural Capability Class

non-irrigated

Prime farmland as defined by the USDA (typically defined as Classes I, II, and III): land that has the best combination of physical and chemical characteristics for producing crops and is also available for these uses.

■ Class I: Few limitations for agriculture	■ Class VI: Severe limitations for agriculture Generally unsuitable for cultivation.
■ Class II: Moderate limitations for agriculture Reduce choice of plants or require moderate conservation practices.	■ Class VII: Very severe limitations for agriculture Unsuitable for cultivation.
■ Class III: Severe limitations for agriculture Reduce choice of plants and/or require special conservation practices.	■ Class VIII: Unsuitable for agriculture Limitations nearly preclude use for cultivation.
■ Class IV: Very severe limitations for agriculture Reduce choice of plants and/or require very careful management.	■ Open water

Sources:
Pacific Northwest Ecosystem Research Consortium: <http://www.fsl.orst.edu/pnwerc/wrb/access.html>
Willamette River Basin Atlas, 2nd Edition: http://www.fsl.orst.edu/pnwerc/wrb/Atlas_web_compressed/2.Landform/2c.soils_web.pdf
Disclaimer: Care was taken in the creation of this map, but it is provided "as is". LCOG cannot accept any responsibility for errors, omissions, or positional accuracy in the digital data or the underlying records.

- Middle Fork Willamette River main stems
- Other rivers, streams
- Major roads

