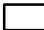






Geology

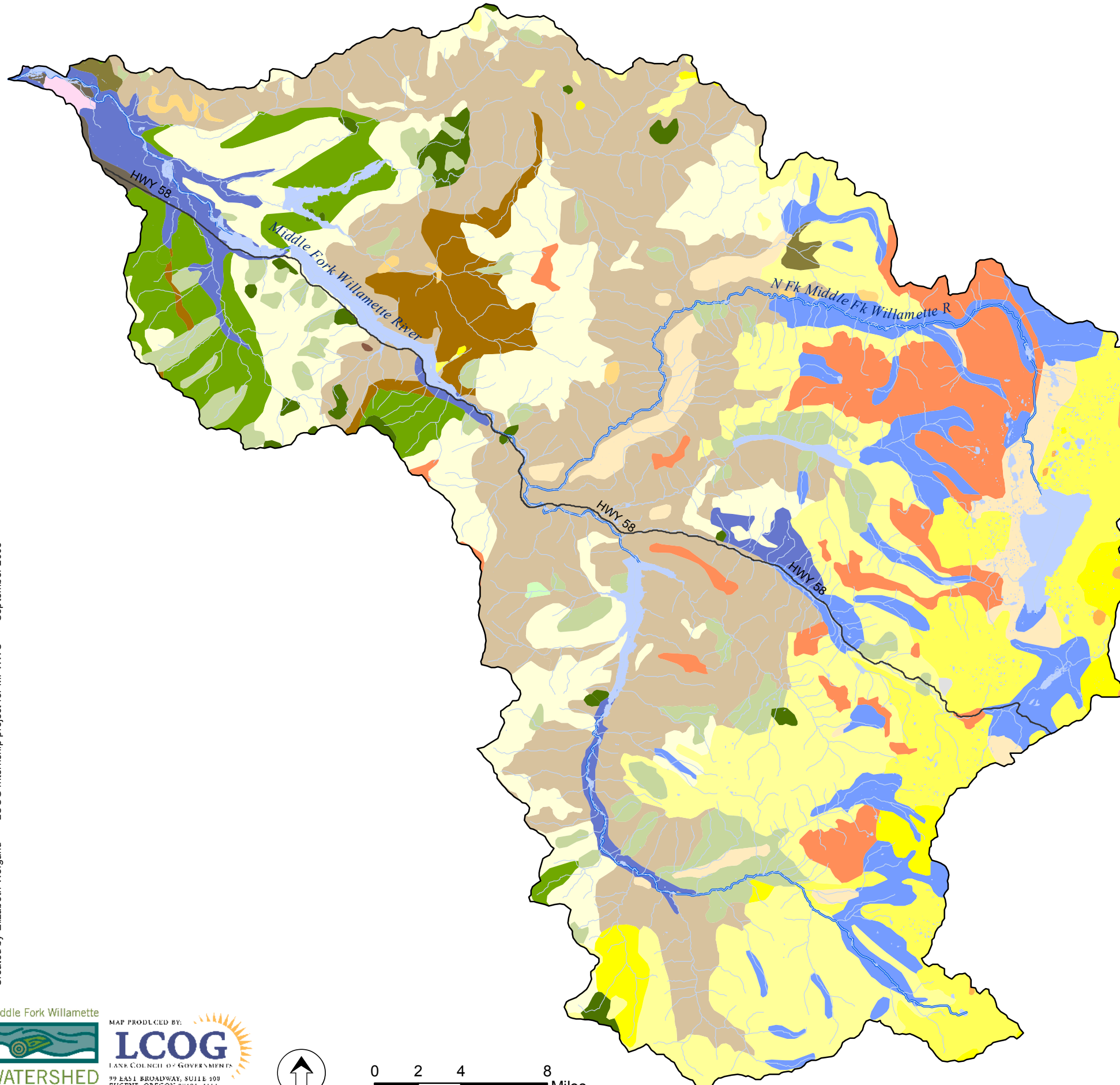
Middle Fork Willamette Watershed

Legend

-  Middle Fork Willamette Watershed basin boundary
-  Major roads
-  Middle Fork Willamette River main stems
-  Other rivers, streams

Geologic Complex

-  Alluvial deposits (sand, gravel, and silt)
-  Basalt and basaltic andesite of High Cascades
-  Basalt and andesite intrusions
-  Basaltic and andesitic ejecta (cinder cones)
-  Basaltic and basaltic andesite lava flows
-  Basaltic and andesitic rocks
-  Basaltic andesite and basalt of High Cascades
-  Basaltic rocks, probably part of Fisher Fm.
-  Glacial deposits (moraines)
-  Glaciofluvial deposits (outwash)
-  Hypabyssal intrusive rocks
-  Lacustrine and fluvial sediments
-  Landslide and debris-flow deposits
-  Mafic vent complexes
-  Open water
-  Ridge-capping basalt and basaltic andesite
-  Sedimentary and volcanoclastic rocks
-  Silicic vent complexes
-  Terrace, pediment, and lag gravels
-  Tuffaceous sedimentary rocks
-  Undifferentiated tuff
-  Undifferentiated tuffaceous sedimentary rocks



Created by Elizabeth Weigand - LCOG internship project for MFWWC - September 2008



Source: Lane Council of Governments
 Disclaimer: Care was taken in the creation of this map, but it is provided "as is". LCOG cannot accept any responsibility for errors, omissions, or positional accuracy in the digital data or the underlying records.