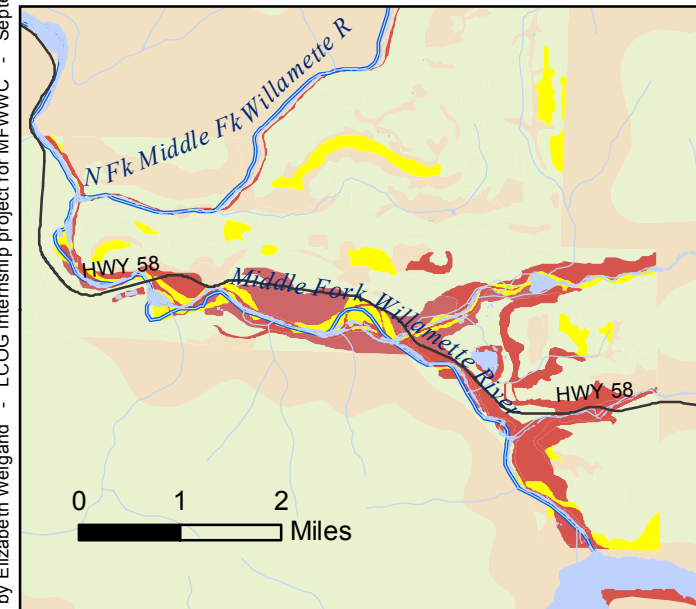
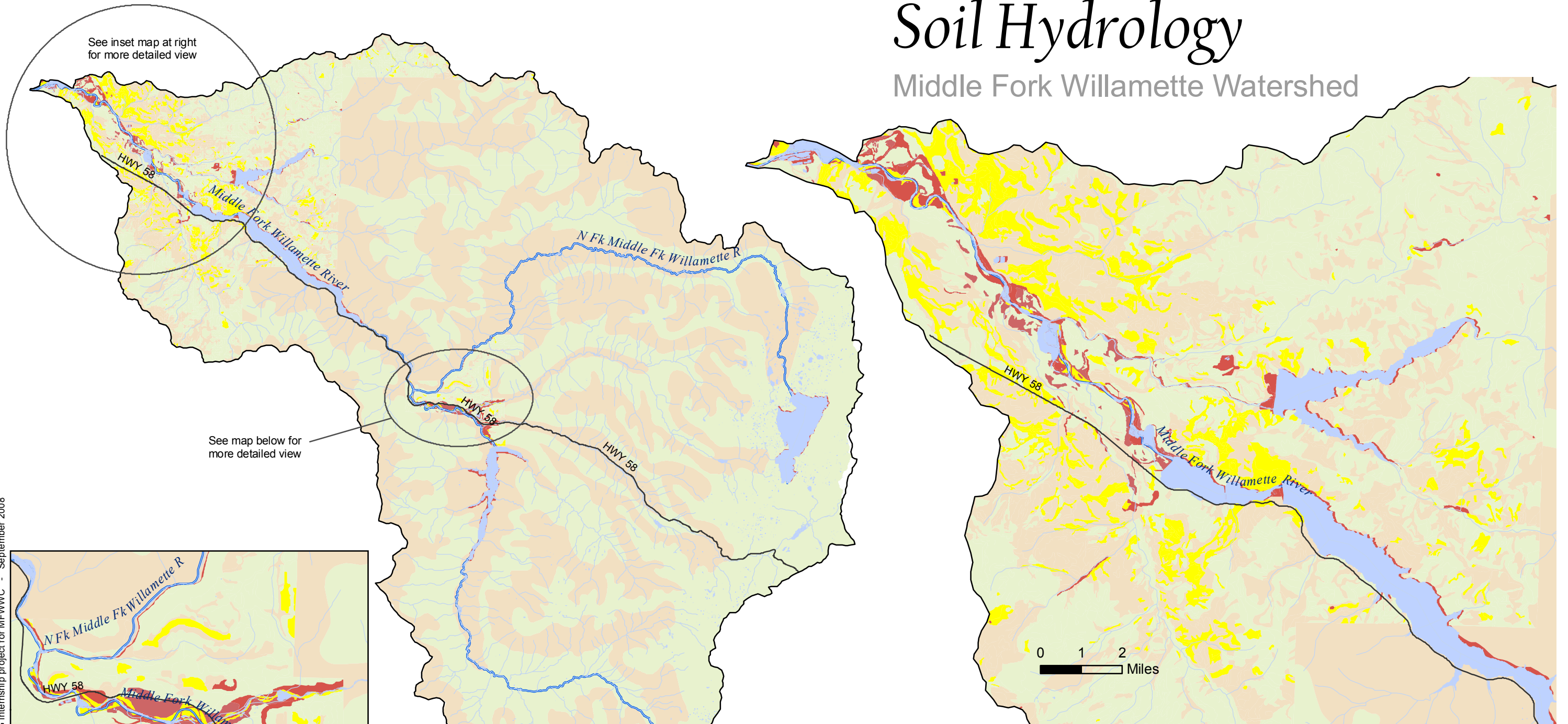


Soil Hydrology

Middle Fork Willamette Watershed



Soil Hydric Group

- Class A: High infiltration rate; very well drained; low runoff potential
- Class B: Moderate infiltration rate; moderately well-drained
- Class C: Slow infiltration rate; poorly drained
- Class D: Very slow infiltration rate; very poorly drained; high runoff potential
- Open water

- Middle Fork Willamette River main stems
- Other rivers, streams
- Major roads



0 2 4 8 Miles